

AABHI Team

Mark A. Gluck, Ph.D., Co-Director, Professor of Neuroscience, Center for Molecular and Behavioral Neuroscience
Diane Hill, Ph.D., Co-Director, Assistant Chancellor, Office of University-Community Partnerships
Ashlee Shaw, Ph.D., Associate Director, African-American Brain Health Initiative
Glenda Wright, Community Research Coordinator, African-American Brain Health Initiative
Deborah Flamengo, Community Engagement Liaison, Office of University-Community Partnerships Graduate Assistant
M. Carolyn Daniels, D.H.Sc., Executive Director, Office of Minority and Multicultural Health, New Jersey Department of Health
Shilda N. Worthy, MPAc, Program Specialist, Office of Minority and Multicultural Health, New Jersey Department of Health
Margaret Cammarieri, Regional Vice President, Health Equity and Multicultural Initiatives, American Heart Association/American Stroke Association

Advisory Board Members

Honorable Mildred Crump, *Council Member City of Newark*
Francis J. Dixon, *New Hope Baptist Church*
Ingrid Williams, *New Hope Baptist Church*
Mildred English, *St. James AME Church*
Dr. Jacqueline Reeves, *St. James AME Church*
Linda Epps, *Bethany Baptist Church*
Donna Sparks, *Bethany Baptist Church*
Geri Woods-Coles, *Bethany Baptist Church*
Reverend Glenn Wilson, *Pilgrim Baptist Church*
Robin Lateef-Pharms, *Bethany Senior Center*
Mary Dawkins, *Hillside Senior Citizen Center*
Linda Barton, *PennRose*
Sheltry Ward, *Northern NJ Black Nurses Association*
Louise Layton, *Rutgers Aging Advisory Council Board*
Margaret Cammarieri, *American Heart Association/American Stroke Association*
Larider Ruffin, *Northern NJ Black Nurses Association*



African-Americans, Brain Health, and Avoiding Alzheimer's Disease

Rutgers University-Newark
Paul Robeson Campus Center
Friday, April 29, 2016

Presented By:

African-American Brain Health Initiative

Center for Molecular and Behavioral Neuroscience
Office of University-Community Partnerships
American Heart Association/American Stroke Association
N.J. Department of Health,
Office of Minority and Multicultural Health



Program

Meet & Greet: A Brain-Healthy Continental Breakfast

Opening Remarks and AABHI Overview

Dr. Diane Hill

Welcoming Remarks

*Dr. Mark Gluck
M. Carolyn Daniels*

Cultivating a Culture of Brain Health in Our Community

Glenda Wright

Exercise Your Way to Brain Health

Dr. Ashlee Shaw

African-Americans and the Benefits of Research

*Ysamerlyn Gonzalez
Al-Nisa Nixon*

Six Steps to a Better Memory

Dr. Mark Gluck

African-Americans and Sleep Deprivation

Dr. Anays Sotolongo

Healthy Living Food and Beverage Toolkit

Margaret Cammarieri

RU-N and NJ Department of Health Presentation
Chancellor Cantor and Commissioner Bennett

Jazz Your Brain: Jazz Concert
Institute for Jazz Studies, Rutgers University-Newark

Lunch: A Brain and Heart Healthy Lunch

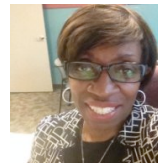
Closing



Diane Hill, Ph.D.
Assistant Chancellor
*University-Community Partnerships
Rutgers University-Newark*



Mark Gluck, Ph.D.
Professor of Neuroscience,
*Center for Molecular and Behavioral Neuroscience
Rutgers University-Newark*



M. Carolyn Daniels, D.H.Sc.
Executive Director,
*Office of Minority and Multicultural Health
New Jersey Department of Health*



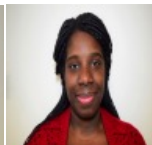
Glenda Wright
Community Research Coordinator,
*African-American Brain Healthy Initiative,
Rutgers University-Newark*



Ashlee Shaw, Ph.D.
Associate Director,
*African-American Brain Healthy Initiative
Rutgers University-Newark*



Ysamerlyn Gonzalez
Sophomore, RU-N Student
Al-Nisa Murray
Junior. RU-N Student



Anays Sotolongo, M.D.
East Orange Veterans Administration Medical Center



Margaret Cammarieri
Regional Vice President,
American Heart Association/American Stroke Association